



10 of these packets for £1.79 on the eBay link below

They do take several weeks to arrive

<http://www.ebay.co.uk/itm/10-bag-Crystal-Clear-Magic-Crystal-Mud-Soil-Water-Beads-Flower-Planting-Vase-New-/150908018233?pt=UK Home Garden Celebrations Occasions ET&hash=item2322d19e39>



Leave to soak in a bowl
over night



Place the expanded beads in a
beaker and add water.

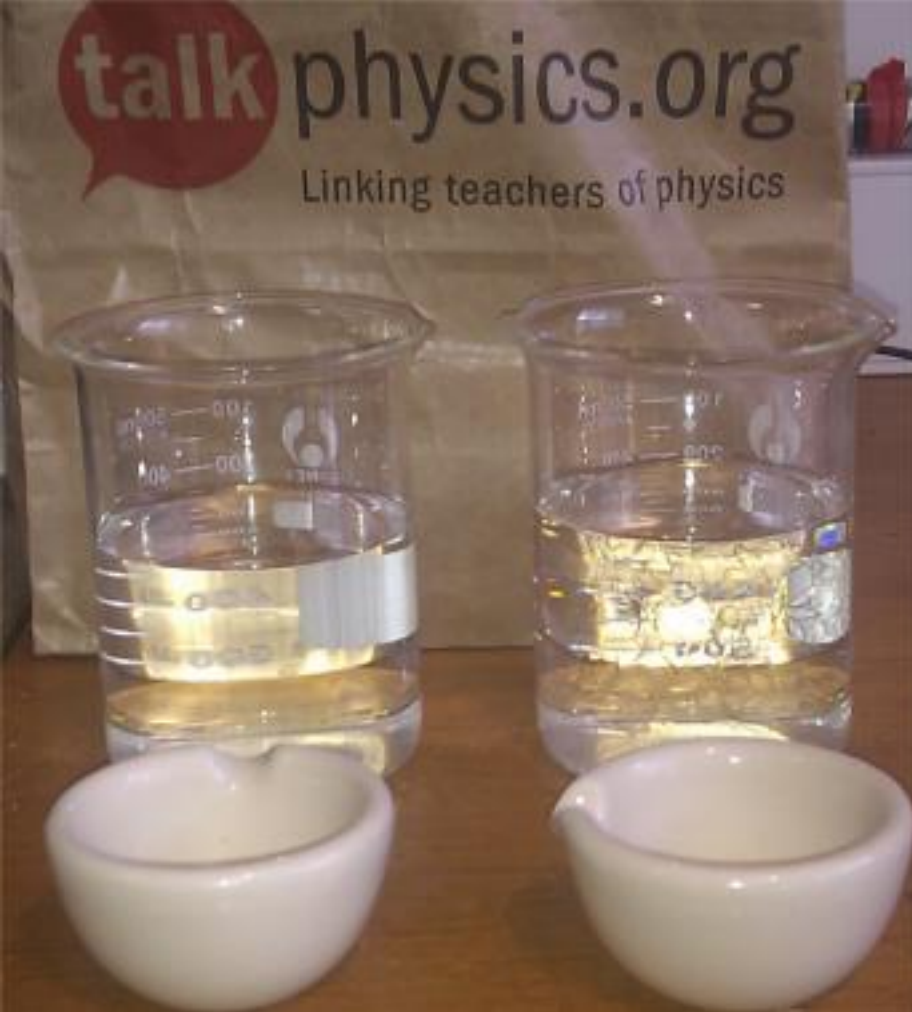


Invisibility

When light traveling through air encounters a glass surface at an angle, some of the light *reflects*. The rest of the light keeps going, but it bends or *refracts* as it moves from the air to the glass. You see a glass object because it both reflects and refracts light.

When light passes from the glass into crystal bead. It's this change in speed is very slight as both materials have a similar refractive index. That causes very little reflection and refraction as it moves from water to glass bead.

The smaller the difference in speed between two clear materials, the less reflection will occur at the boundary and the less refraction will occur for the transmitted light. If a transparent object is surrounded by another material that has the same index of refraction, then the speed of light will not change as it enters the object. No reflection and no refraction will take place, and the object will be invisible.



A what happens next style question can be asked.
The camera is very good at picking up the beads.
They look a lot more invisible with the unaided eye.

